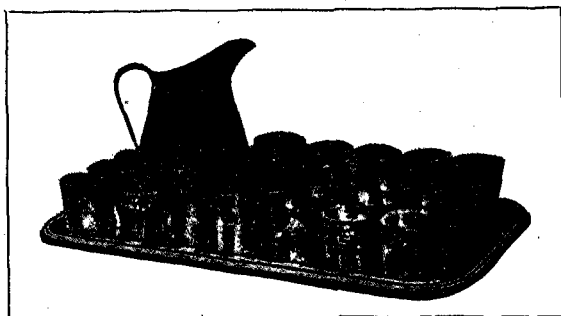


USEFUL APPLIANCES.

Two useful accessories in a ward are those of which we give illustrations, the S. & S. Medicine Serving Tray, so called from the firm which supplies it, Messrs. Sharp & Smith, of Chicago, and the S. & S. Thermometer Tray.

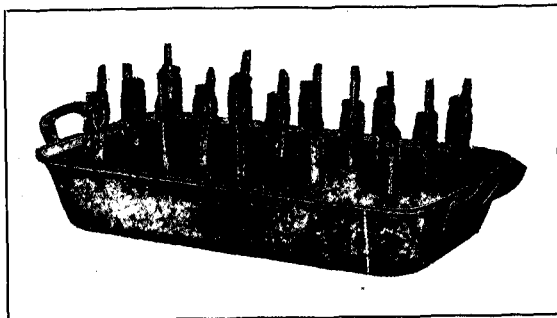
The Medicine Tray is enamelled white, and is furnished with a nickel-plated rack which holds as many medicine glasses as the needs of the ward may require, and a large white enamelled water pitcher. The nurse can thus pass from bed to bed without needing to replenish glasses or



THE MEDICINE SERVING TRAY.

water. The tray shown in this illustration has a serving capacity of thirty-one glasses.

The Thermometer Tray also provides for an individual thermometer for each patient, a refinement which must be greatly appreciated by



THE THERMOMETER TRAY.

patients. In addition the temperatures can be taken in a much shorter time.

A HOME OF REST.

Nurses and others who desire to enjoy the bracing air of the South East Coast during their holidays may be glad to know that Miss Isabel Jones and Miss Emery receive paying guests at Homeland, 1, York Road, West Cliff, Herne Bay, on moderate terms, offering every care and comfort. As both are fully trained nurses they understand the needs of nurses requiring a rest, and do their best to make them happy.

APPOINTMENTS.

MATRON.

Clare Hall Sanatorium, South Mimms, Barnet.—Miss Dagmar Wilkes has been appointed Matron. She received fever training at the Middlesbrough Sanatorium, and general training at the Fulham Infirmary, Hammersmith. She has held the positions of Staff Nurse at the Astley Sanatorium, and the Throat Hospital, Golden Square, London; of Night Sister at the Warrington Isolation Hospital, and of Matron at the Ashton under Lyne Borough Isolation Hospital, and Hartshead Joint Smallpox Hospital.

Park Hospital, Hither Green, Lewisham.—Miss J. H. Balsillie has been appointed Matron. She was trained at the Royal Infirmary, Edinburgh, and the Evelina Hospital, London. She was also Home Sister for nearly three years, and Second Assistant Matron for two years, at Queen Mary's Hospital for Children, Carshalton, and is at present Matron at the Downs Sanatorium. She is thus transferred from the infectious hospitals' service to the children's hospital service under the Metropolitan Asylums Board.

Isolation Hospital, Tunbridge Wells.—Miss J. McKinnon Smith has been appointed Matron. She was trained at the Royal Infirmary, Edinburgh, and has been Sister and Night Superintendent at Leith Fever Hospital and Sister at the Leith Hospital.

ASSISTANT MATRON.

St. George's Hospital, Hyde Park Corner, S.W.—Miss Babbie who is at present Assistant Lady Superintendent at the Royal Sea Bathing Hospital, Margate, has been appointed Assistant Matron. She was trained at St. George's Hospital, where she subsequently held the position of Sister and Night Superintendent.

Chelsea Hospital for Women, Fulham Road, S.W.—Miss Nora Graham has been appointed Assistant Matron. She was trained at the Royal Infirmary, Dundee, where she subsequently held the position of Sister of a gynæcological ward. She has been Sister of a surgical ward at the Royal Hospital for Sick Children, Edinburgh, and Night Superintendent at Charing Cross Hospital from August, 1913, to the present date.

Alexandra Hospital for Children with Hip Disease, Queen Square, Bloomsbury.—Miss Florence Tawn has been appointed Assistant Matron. She was trained at Charing Cross Hospital, W.C., and has held the positions of Sister at the Chelmsford General Hospital, Night Sister at the West Sussex County Hospital, Hastings, and Night Sister at the Chesterfield and North Derbyshire Hospital, Chesterfield. She is a certified midwife.

ASSISTANT LADY SUPERINTENDENT

Royal Sea Bathing Hospital, Margate.—Miss Jeans has been appointed Assistant Lady Superintendent. She at present holds the position of Sister at St. George's Hospital, S.W.

Worcester City and County Nursing Association, Worcester.—Miss Deborah Anne Ladbroke has

[previous page](#)

[next page](#)